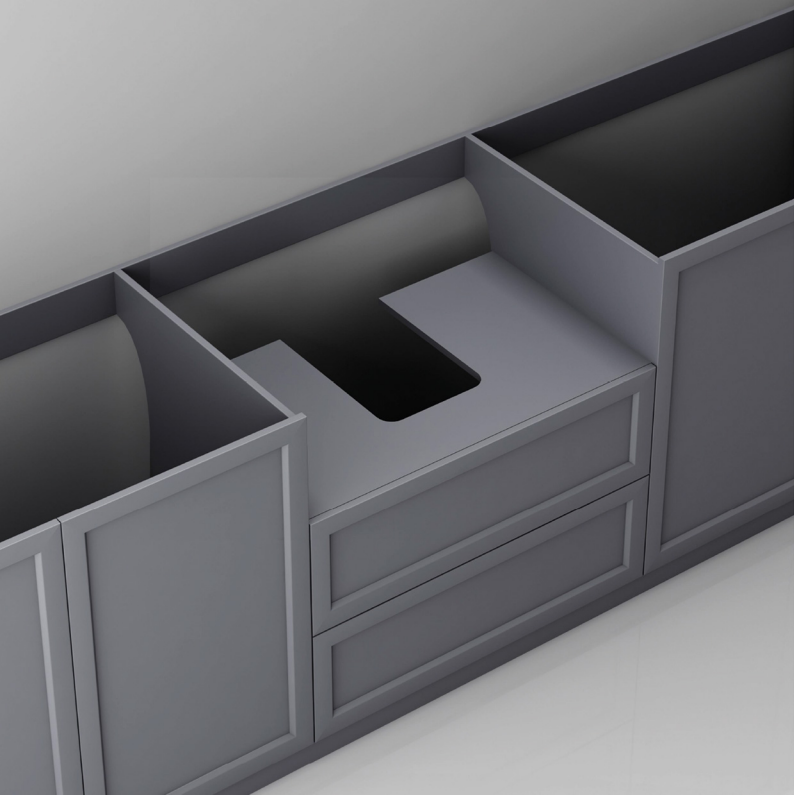


**install the cabinet  
in the kitchen or other  
designated area**



①

Install the cabinet in the toilet Or  
other designated areas



countertop



②

Please distinguish the front and back of the countertop, and install it on the corresponding cabinet according to the size of the countertop.



faucet

3



3

Install the faucet in the  
corresponding countertop groove.



4

4. Push the FFC / Ceramic Kitchen Sink slowly in the corresponding position of the notch.



The pipe



5

5. Install the strainer in the FFC / Ceramic Kitchen Sink first, and then install the drain pipe.



## COMPLETE

Installation is complete,  
enjoy your brand new kitchen!